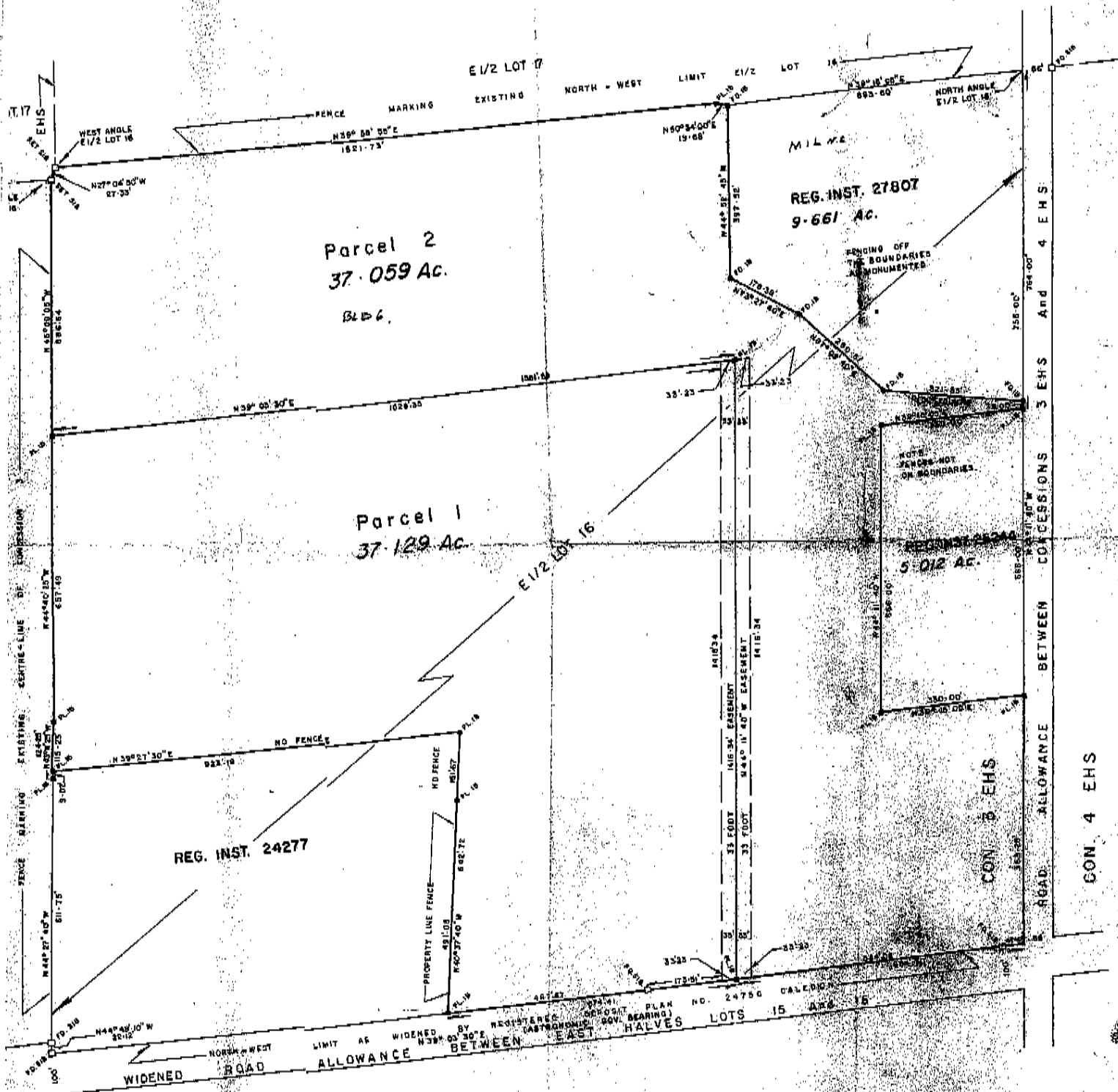


PLAN OF SURVEY OF
 PART OF E 1/2 LOT 16, CON. 3 E.H.S.
 TOWNSHIP OF CALEDON
 COUNTY OF PEEL
 SCALE: 1" = 200'



W.H. Carr
 ONTARIO LAND SURVEYOR
 DEC. 16/11, 1967

NOTE:
 5/8" x 30" x 24" LAMP-IRON BARS PLANTED
 AND FOUND SHOWING CORNER
 1/40" 48" LONG RODS SET
 AND FOUND PLANTING

W.H. CARR, P. Eng.
 ONTARIO LAND SURVEYOR
 155 MOUNTAINVIEW ROAD S.
 BRANTFORD, Ont.
 PHONE 357-2211